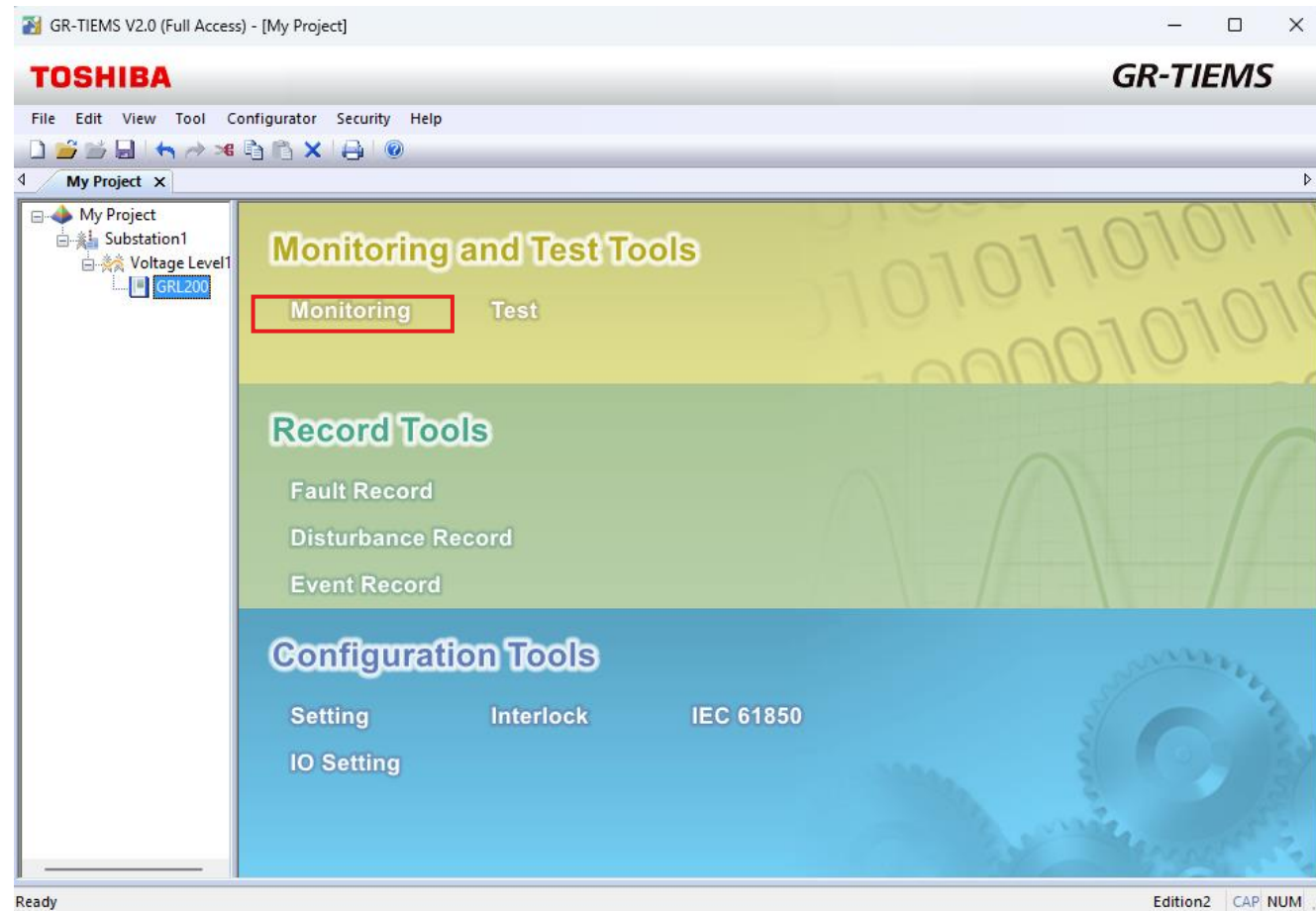


# IED Signals Monitoring using GR-TIEMS

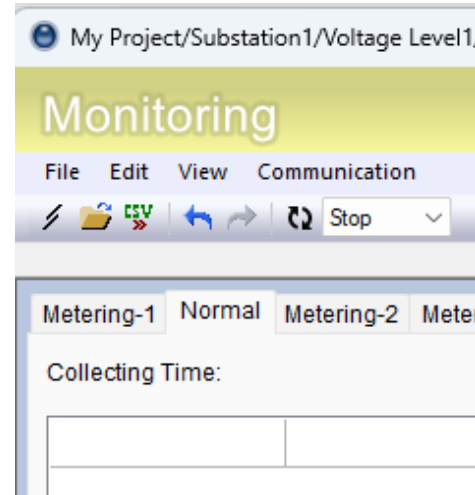
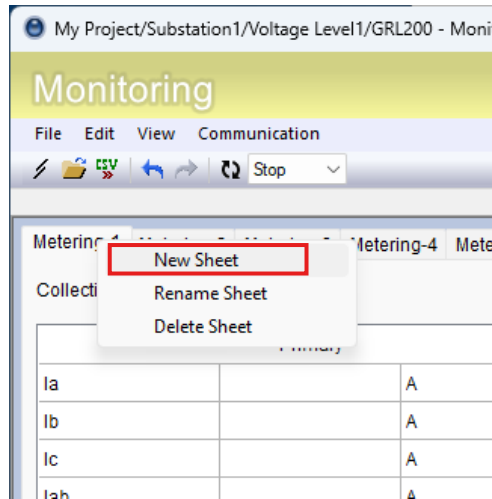
# Overview

At starting window of GR-TIEMS, select monitoring

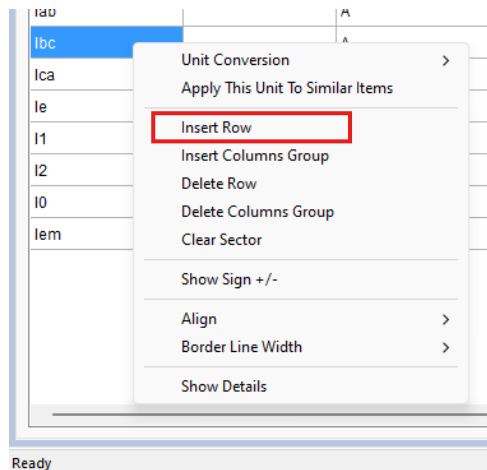


# Adding sector

Inside monitoring function, users can either create new sheet or insert row for signal placement



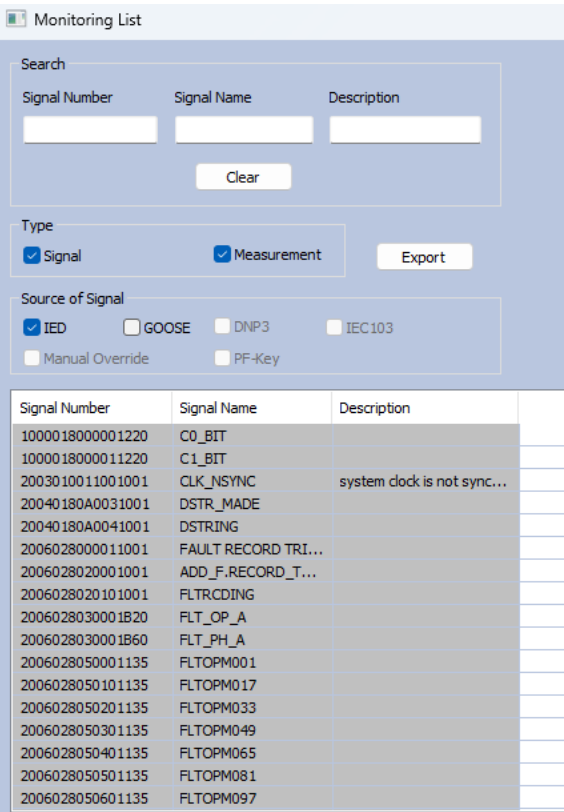
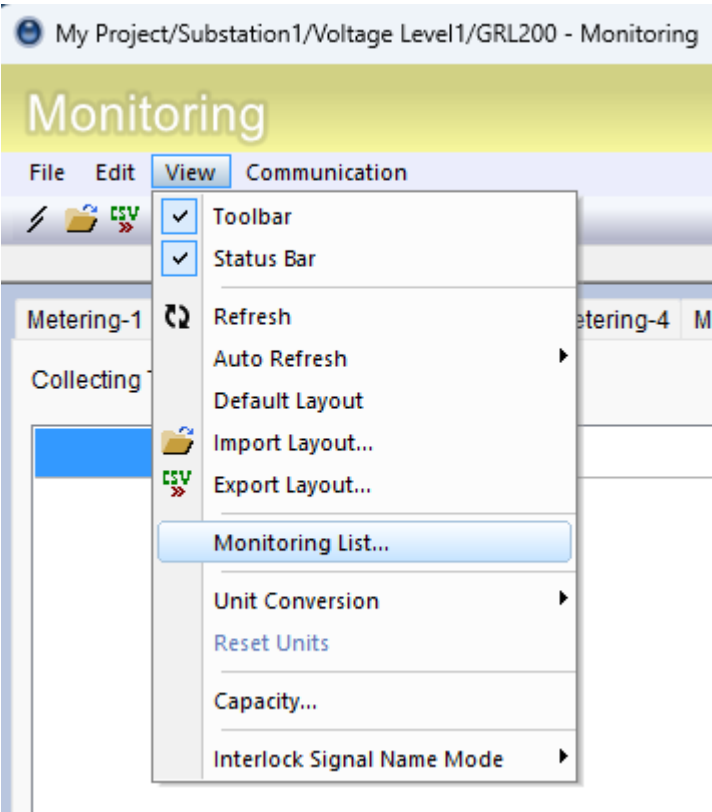
Right click and add new sheet



Right click and select Insert row

# Monitoring list

Click View → Monitoring list to display signal list



# Drag and drop signals

Type in signal number or signal name, then drag and drop the signal into the previously added sector

Monitoring List

Search

Signal Number

Signal Name

Description

Clear

Type

☒ Signal

☒ Measurement

Export

Source of Signal

☒ IED

☐ GOOSE

☐ DNP3

☐ IEC103

☐ Manual Override

☐ PF-Key

My Project/Substation1/Voltage Level1/GRL200 - Monitoring

Monitoring

File Edit View Communication

Metering-1

Normal

Metering-2

Metering-3

Metering-4

Metering...

Collecting Time:

OC-OPT-TRIP

Signal Number

Signal Name

Description

OC-OPT

Clear

Type

☒ Signal

☒ Measurement

Export

Source of Signal

☒ IED

☐ GOOSE

☐ DNP3

☐ IEC103

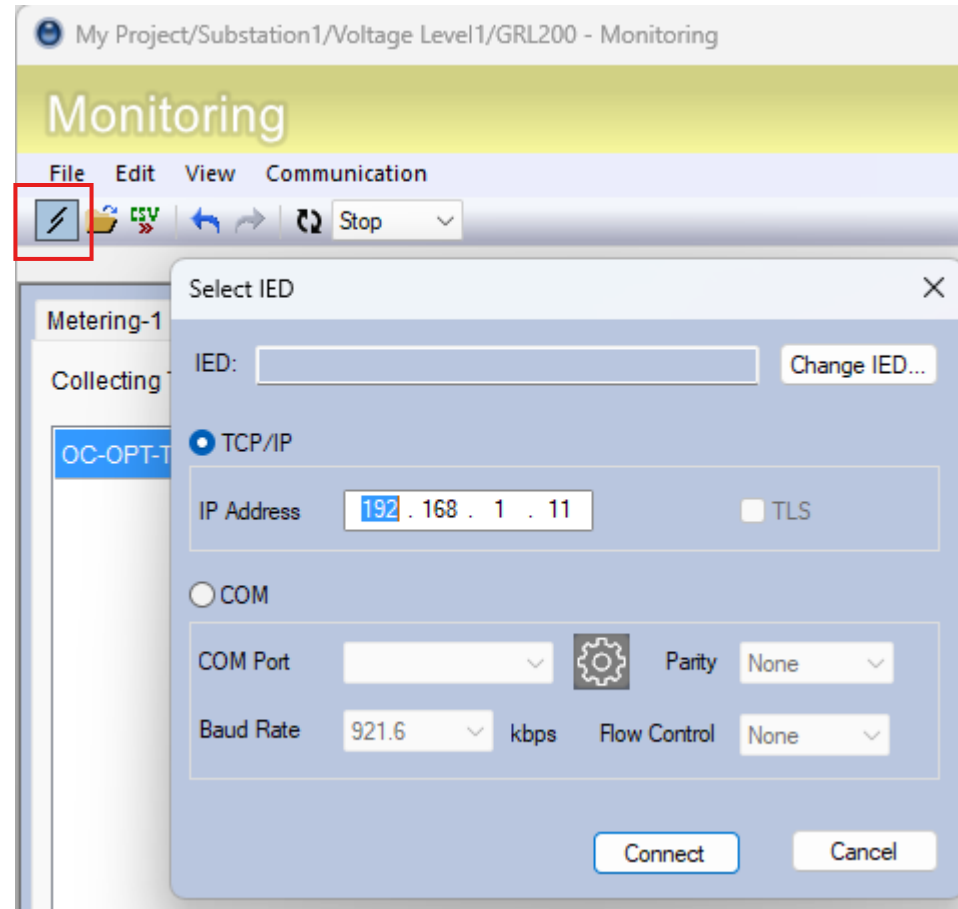
☐ Manual Override

☐ PF-Key

*Drag and drop*

# IED connection establishment

Click "Select IED" then choose communication method between PC and IED  
The signal displays BOOLEAN value (0 or 1) in the sector



# Time period

If users want to monitor signals after a certain time, expand and select the desired seconds.

